

Every 15 000 km / 10 000 miles

All types

## Note

When checking the service and parking brake on dynamometer, be sure to observe the minimum decelerations specified by pertinent legislation, as well as permissible deviations. German regulations specify the following minimum decelerations:

Service brake 40 % or  $2.5 \text{ m/s}^2$

Parking brake 20 % or  $1.5 \text{ m/s}^2$

In addition, the following higher deviations are permitted on dynamometers:

Chassis dynamometer 30 %

Platform dynamometer 20 %

Pertinent regulations of other countries must be observed.

## Parking brake

Vehicles with foot-operated parking brake

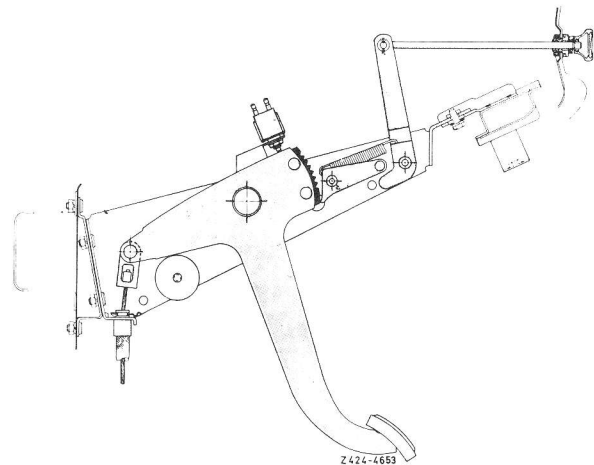
### Type 100

The parking brake adjusts itself automatically.

- Check whether the parking brake releases itself when a gear is selected.

### Types 107, 114, 115, 116

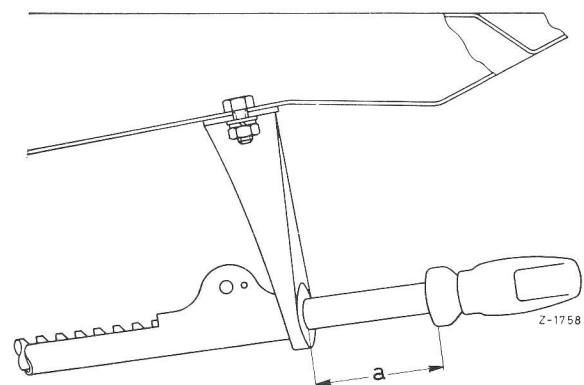
- Applying a force of 400 N (40 kp) the foot pedal must be depressed through 3–4 teeth.

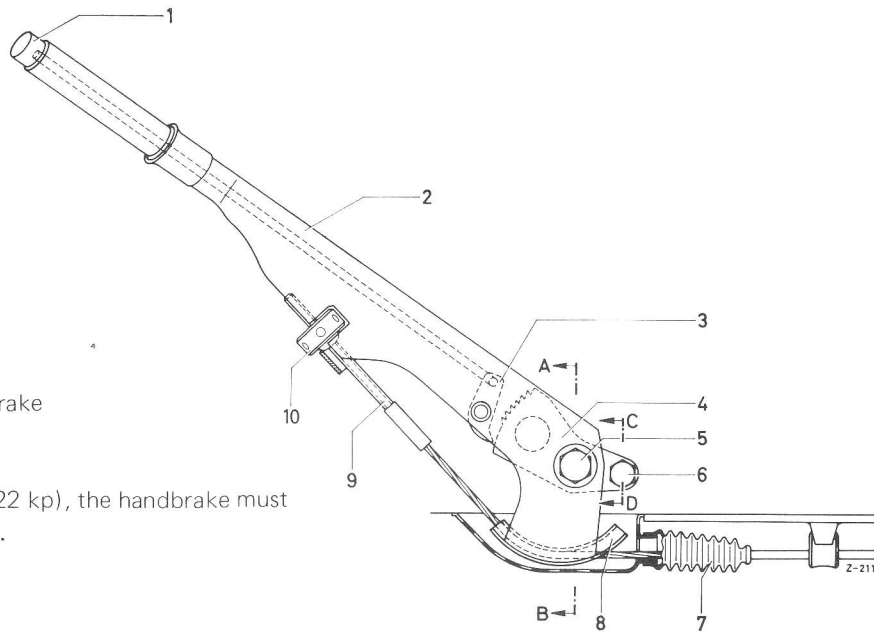


Vehicles with pistol grip hand brake

### Types 108, 109, 111

- Applying a force of 400 N (40 kp), the pawl rod must be pulled out through 5–6 teeth.





Vehicles with lever-type hand brake  
**Type 113**

- Applying a force of 220 N (22 kp), the handbrake must be pulled on through 3–4 teeth.

#### Note

- If the given distances are exceeded, the parking brake needs adjusting (see item 706).
- Measure deceleration values of parking brake on brake dynamometer.

#### Service brake

- Check free travel of brake foot pedal. With a force of 200 N (20 kp) the foot brake pedal must be depressed approx. half of its travel. The test must be carried out with vacuum or compressed air assistance.
- Measure deceleration values of service brake on brake dynamometer.